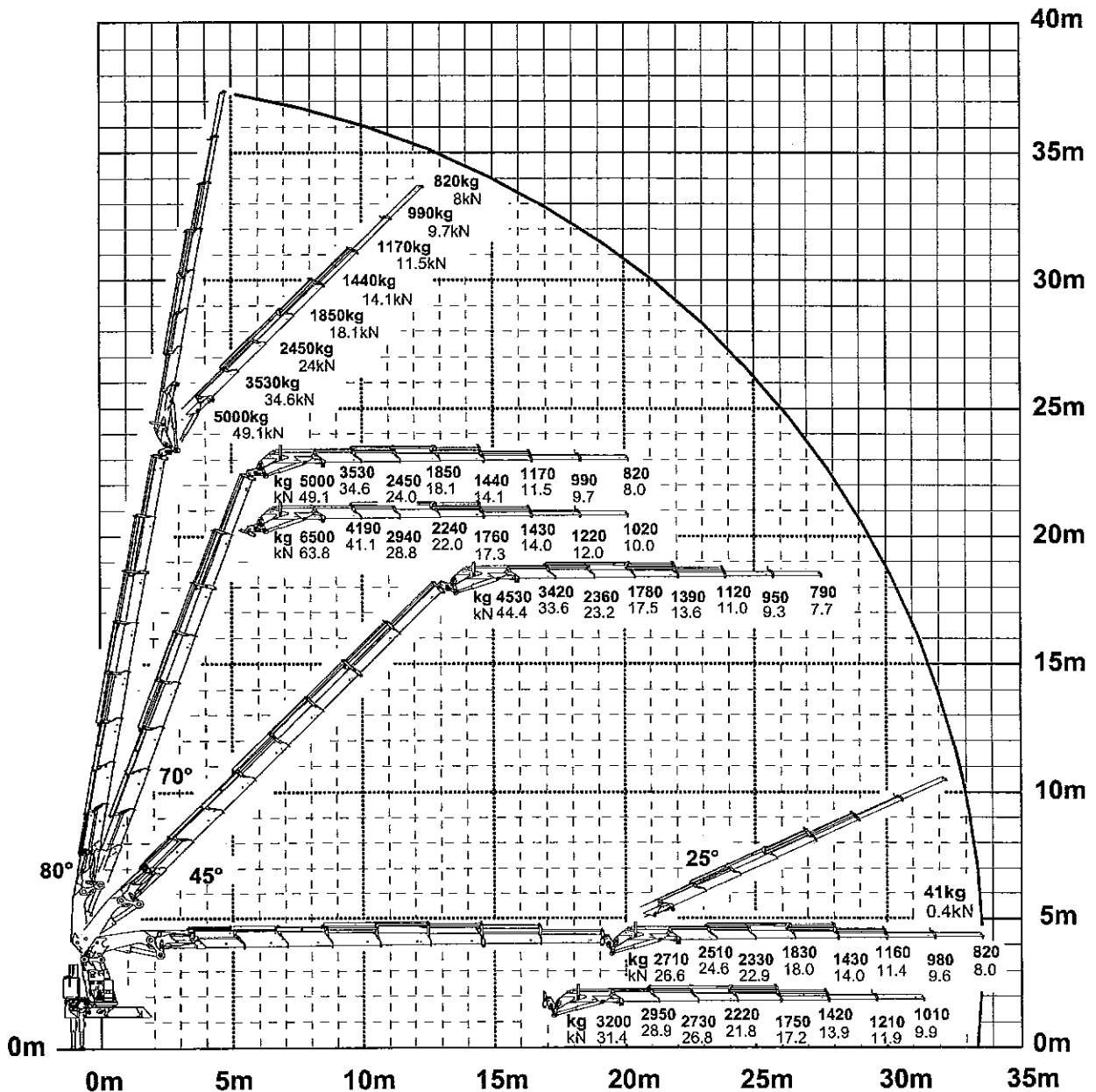
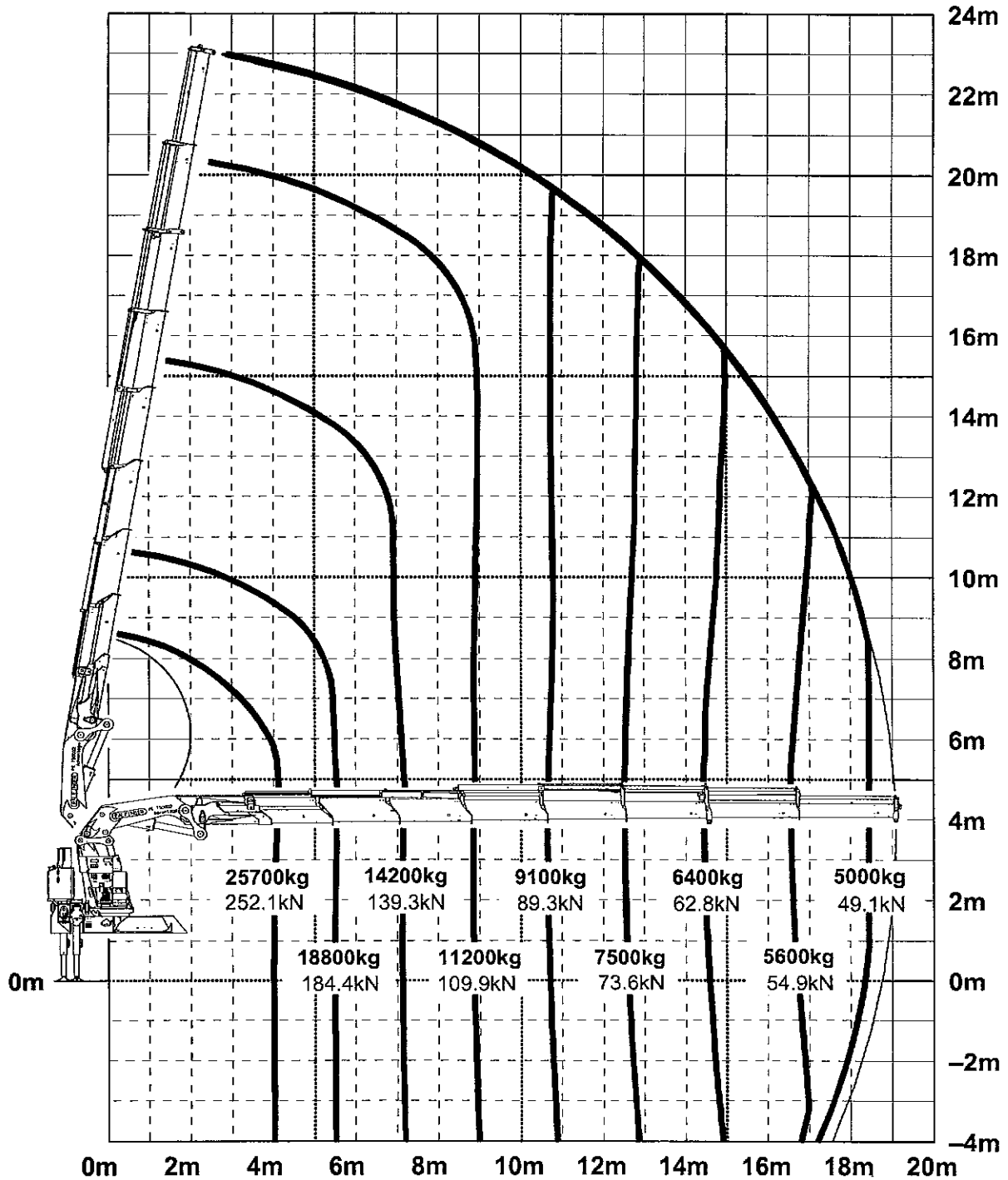


Dual Power System

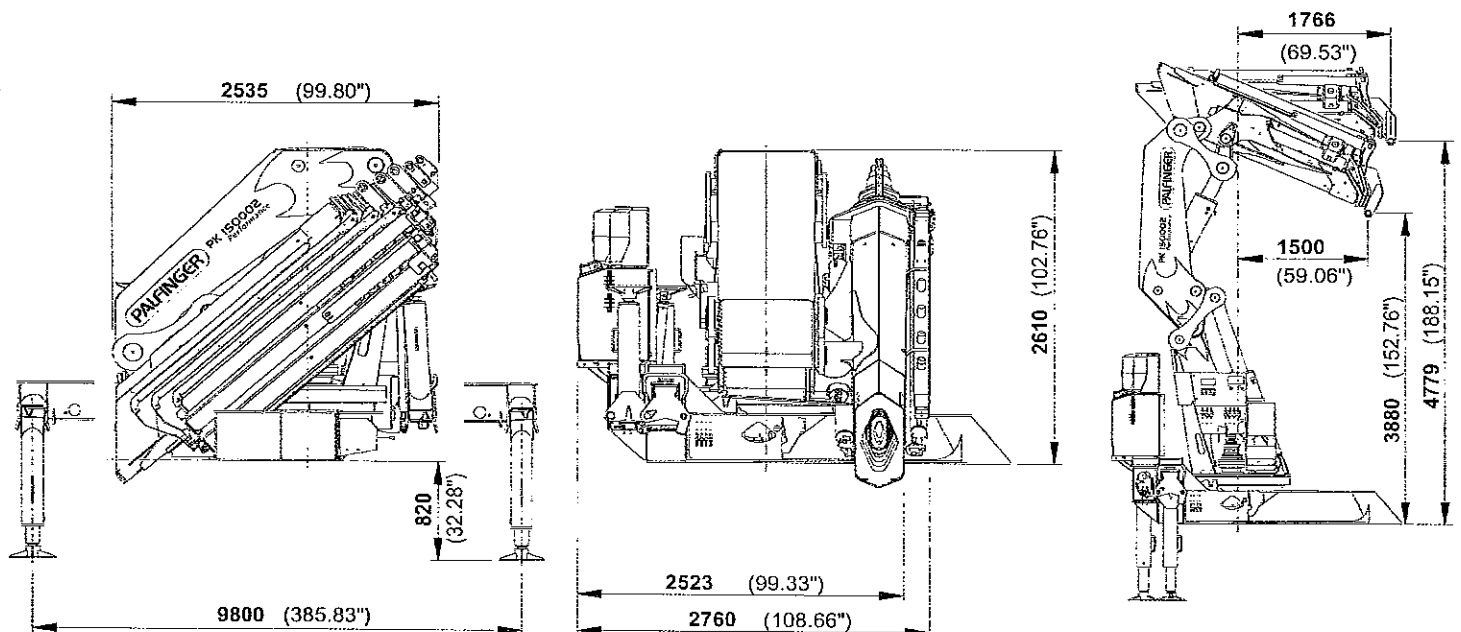
Die Tragkräfte laut Diagramm verringern sich bei Verwendung von mechanischen Verlängerungen um deren Eigengewicht.
 When using mechanical boom extensions, the loads, shown on the charts need to be reduced by the weight of these extensions.
 Les charges admissibles du diagramme ci-apres se reduisent du poids de la rallonge manuelle utilisee.





PK 150002 Performance		
Technical Specifications (EN 12999-H1-B3)		
Max. lifting moment	116.8 mt/1146.0 kNm	844940 ft.lbs
Max. lifting capacity	40000 kg/392.4 kN	88180 lbs
Max. hydraulic outreach	21.5 m	70' 6"
Max. manual outreach	26.9 m	88' 3"
Max. outreach (with fly-jib)	36.0 m	118' 1"
Stewing angle	endless	

PK 150002 Performance		
Standard crane		
Slewing torque	12.0 mt/118.0 kNm	87000 ft.lbs
Outreach	8.9 m	29' 2"
Stabilizer spread standard	9.8 m	32' 2"
Fitting space required	min. 2.52 m/8' 3"	max. 2.76 m/9'
Width folded	2.55 m	8' 4"
Max. operating pressure	330 bar	4785 psi
Recommended pump capacity with RC- and LS-system	2 x 100 l/min	22.0 imp.gal./min 26.4 US gal./min
Dead weight standard crane	11520 kg	25400 lbs



Applications shown in the leaflet do not always correspond to the standard specifications. Design and specification are subject to change without prior notice. Country-specific regulations must be considered for the crane installation.