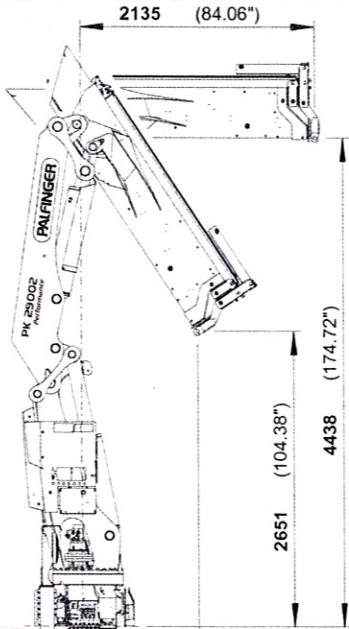
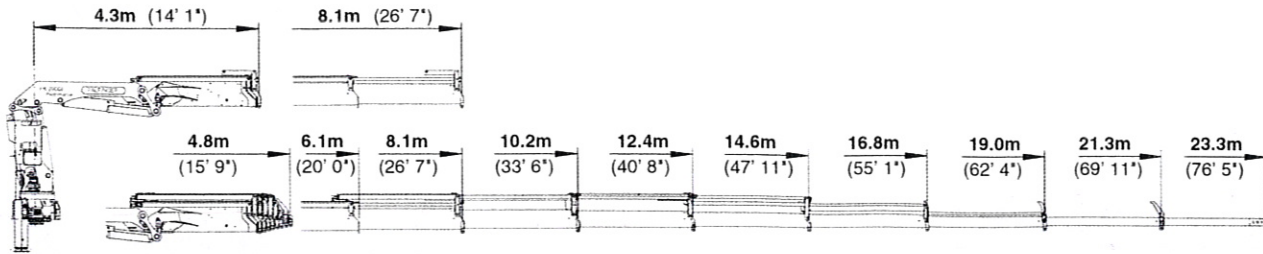


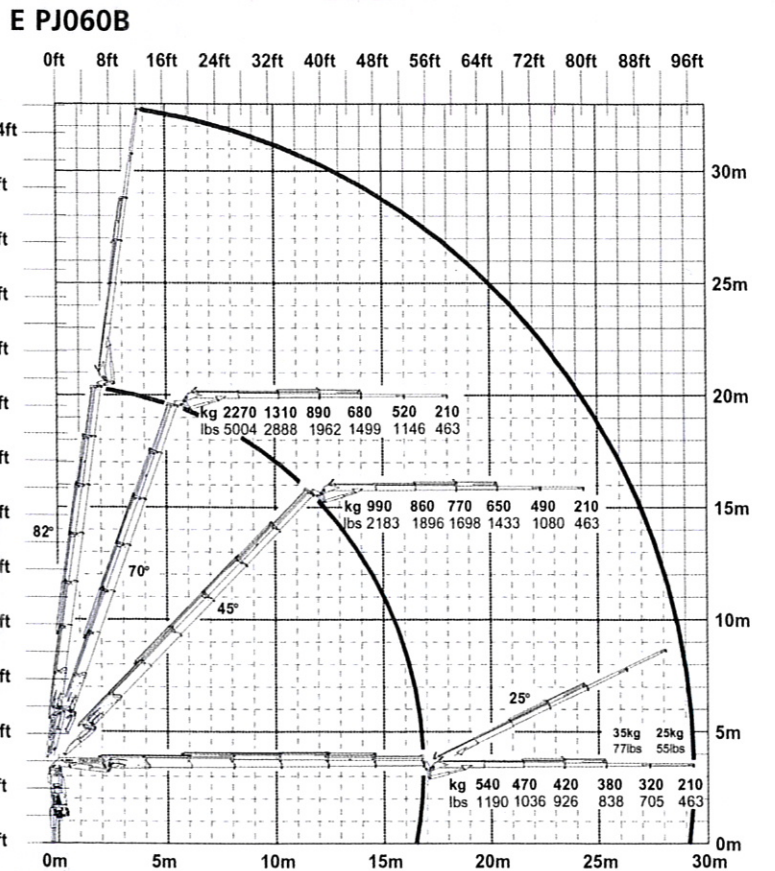
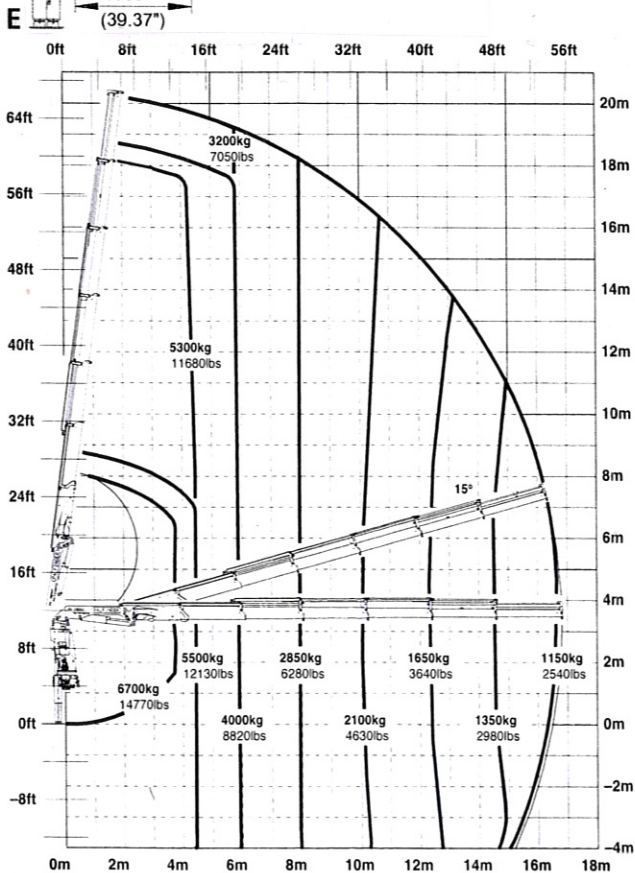
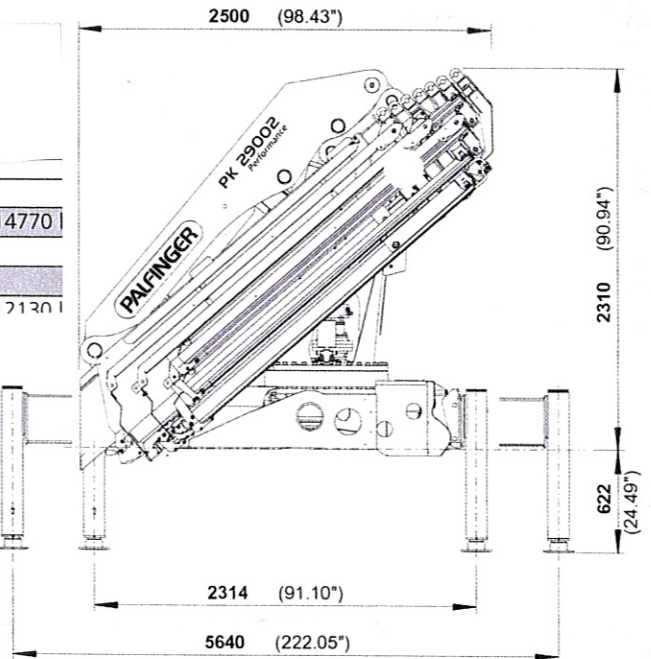
# PK 29002

## Performance

### Max. lifting capacities



PK 29002 Performance E		
Max. lifting capacities		6700 kg/14770
Outreach	Capacity	
<b>hydraulic</b>		
4.6 m	15' 1"	5500 kg
6.0 m	19' 8"	3990 kg
7.9 m	25' 11"	2840 kg
10.1 m	33' 2"	2090 kg
12.2 m	40' 0"	1630 kg
14.4 m	47' 3"	1350 kg
16.7 m	54' 9"	1160 kg
<b>manual</b>		
18.8 m	61' 8"	960 kg
21.0 m	68' 11"	810 kg
23.0 m	75' 6"	570 kg



The outreaches stated are with a boom angle of 20° and are the